

# exacqVision EL

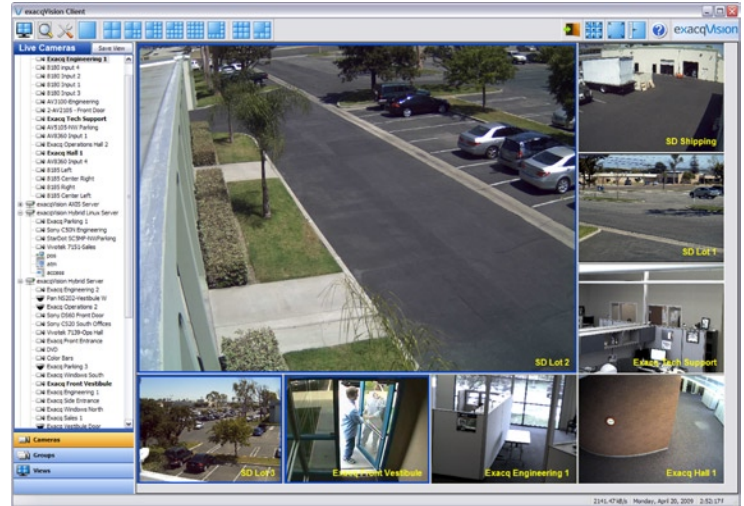
## Cross Platform IP Video Surveillance Software and Systems Hybrid NVR Servers - exacqVision EL

16 Analog Inputs and up to 24 IP Inputs  
120 ips or 480 ips (up to 2TB storage)

### Compact, Reliable, Energy-Efficient Hybrid NVR Appliance



exacqVision EL is a low cost, highly energy efficient, hybrid network video surveillance appliance that provides a new level of reliability, performance and energy efficiency. High reliability is achieved through the use of Linux OS on a solid-state drive, ensuring the unit is always accessible.



## Features

### exacqVision EL 1U Rackmount Hybrid NVR Servers & exacqVision VMS Software



Mac



- **High Reliability** – Fully functional Linux OS on a solid-state drive ensures unit keeps functioning and alerts you of hard drive failures.
- **True Hybrid** – Any combination of analog and IP cameras from all of the leading camera vendors. Standard resolution or megapixel, even the latest H.264 compression IP cameras. Use existing analog cameras today, add up to 24 IP cameras.
- **Compact Chassis** – 1.5U Rackmount professional chassis can be used in tight spaces, under the counter, equipment cabinets, or in professional IT racks. Stack units for high-density camera counts.
- **Built-in DVD/CD-RW drive** – easily export video clips using the built-in CD/DVD-RW drive, or to USB flash drives.
- **High Energy Efficiency** – Reduced energy footprint and lower lifetime operating cost through energy efficient design. Thermally-optimized chassis ensures cool operation and high reliability.
- **Low Cost** – one of the least expensive, true hybrid systems to purchase and operate on the market today.
- **High Performance** – Optimized application for the latest Intel® Atom™ microprocessor, providing high performance with very low power consumption and heat generation.
- **Intuitive exacqVision Software** - all of the features of exacqVision are available on this unit. Use as an inexpensive stand-alone system, or as part of a large enterprise system.
- **Cross-Platform Client** – View, search and administer with the exacqVision client software on Windows, Linux and Macintosh computers.



IP Camera Integration

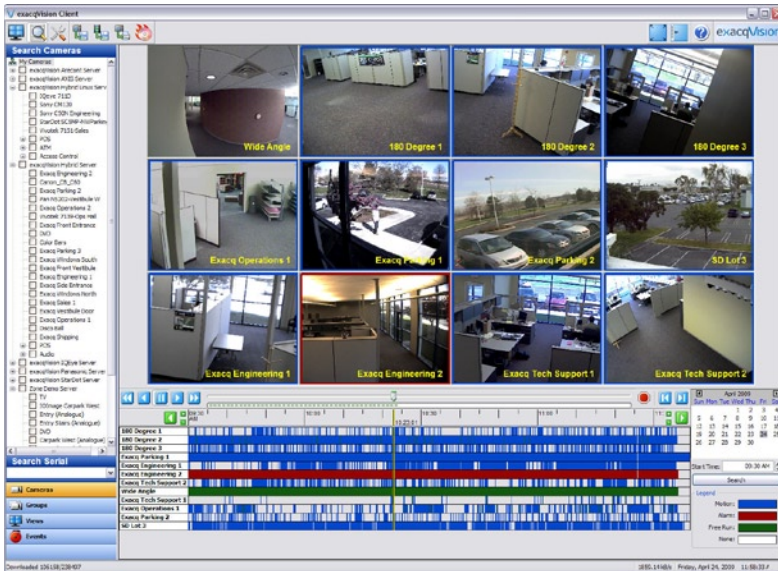


Access Control Integration



# Technical Specifications - exacqVision EL 1.5U Hybrid NVR Appliance

## exacqVision Client - Intuitive Video Management System Software Included



- Control all exacqVision systems through a single interface
- Multiple users can be connected, each with different permission levels
- Auto-detection of IP cameras
- Control PTZ cameras (analog and IP)
- Digital PTZ on any camera (live or recorded)
- Easy search across multiple systems
- Easy export of multi-camera clips with built-in DVD-R or USB flash
- exacqRecall - single button export video
- Client can run locally or on any Windows, Linux or Macintosh computer
- Multi-monitor support (create a video wall)
- Fully functional versions for Windows, Linux and Macintosh (all included)



### exacqVision EL SERVER APPLIANCE SPECIFICATIONS

RECORDING RESOLUTION - ANALOG	CIF: 352x240 NTSC / 352x288 PAL 2CIF: 720x240 NTSC / 720x288 PAL 4CIF (D1): 720x480 NTSC / 720x576 PAL
RECORDING RESOLUTION - IP CAMERAS	Up to 5 Megapixel (camera dependent)
FRAME RATE - ANALOG	NTSC: 120/480 IPS PAL: 100/400 IPS
COMPRESSION - ANALOG	MPEG-4 ASP or MJPEG hardware compression
COMPRESSION - IP CAMERAS	H.264, MPEG-4, MJPEG
ALARM INPUTS	4 TTL inputs
ALARM OUTPUTS	2 TTL outputs and 1 relay output
SERIAL CONNECTIONS	RS-485 PTZ port, RS-232 port
NIC	1 Gbit 1000Base T RJ-45
USB2 PORTS	6 (2 front, 4 rear)
AUDIO INPUTS	4 + IP camera audio
HARD DRIVE STORAGE	Enterprise class (see model numbers) up to 2 TB
VGA OUTPUT	1 VGA (DB15)
KEYBOARD & MOUSE	Included
DVD/CD RW	Included (front panel access)
WATCHDOG TIMER	Included
OPERATING SYSTEM	Linux embedded on solid state drive
COMPATIBLE CLIENT OPERATING SYSTEMS	Windows, Linux, Mac
VIDEO INPUTS (ANALOG)	16 BNC
ANALOG PTZ PROTOCOLS:	Pelco D/P, GE-Impac, GE-ASCII, Bosch, Panasonic
VIDEO INPUTS (IP)	Up to 24 per server
ANALOG OUTPUTS	2 BNC
REGULATORY	CE (Class A), FCC (Class A)
WARRANTY	3 Years, parts & labor
DIMENSIONS (LxWxH):	14.5 x 17 x 2.5 (1.5U) inches 36.8 x 43.2 x 6.3 cm
WEIGHT:	11.1 lbs. (without rack kit) 5.03 kg (without rack kit)
RELATIVE HUMIDITY	5-95% RH (non-condensing)
OPERATING TEMPERATURE	40 - 90° F / 4.5 - 35° C
INPUT VOLTAGE:	120/240 VAC auto-sensing
POWER CONSUMPTION:	35 watts max (120 ips) / 42 watts max (480 ips)

Model #	Analog Inputs	IPS	Analog Outputs	IP Licenses	HD Capacity
1600-12-0160-EL	16	120	1 mux / 1 spot	Up to 24	160 GB
1600-12-0320-EL	16	120	1 mux / 1 spot	Up to 24	320 GB
1600-12-0500-EL	16	120	1 mux / 1 spot	Up to 24	500 GB
1600-12-0750-EL	16	120	1 mux / 1 spot	Up to 24	750 GB
1600-12-1000-EL	16	120	1 mux / 1 spot	Up to 24	1000 GB
1600-12-2000-EL	16	120	1 mux / 1 spot	Up to 24	2000 GB
1600-48-0160-EL	16	480	1 mux / 1 spot	Up to 24	160 GB
1600-48-0320-EL	16	480	1 mux / 1 spot	Up to 24	320 GB
1600-48-0500-EL	16	480	1 mux / 1 spot	Up to 24	500 GB
1600-48-0750-EL	16	480	1 mux / 1 spot	Up to 24	750 GB
1600-48-1000-EL	16	480	1 mux / 1 spot	Up to 24	1000 GB
1600-48-2000-EL	16	480	1 mux / 1 spot	Up to 24	2000 GB
Item #	Description				
EVIP-01-01	IP camera license for any exacqVision system				
5000-64100	Rack-mount Kits for exacqVision EL (adapters, handles)				

